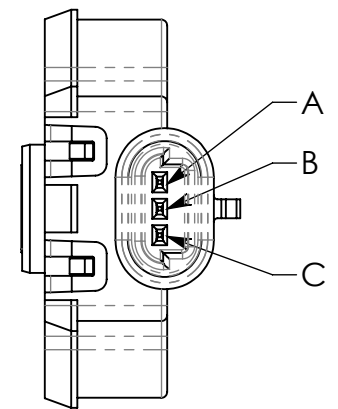
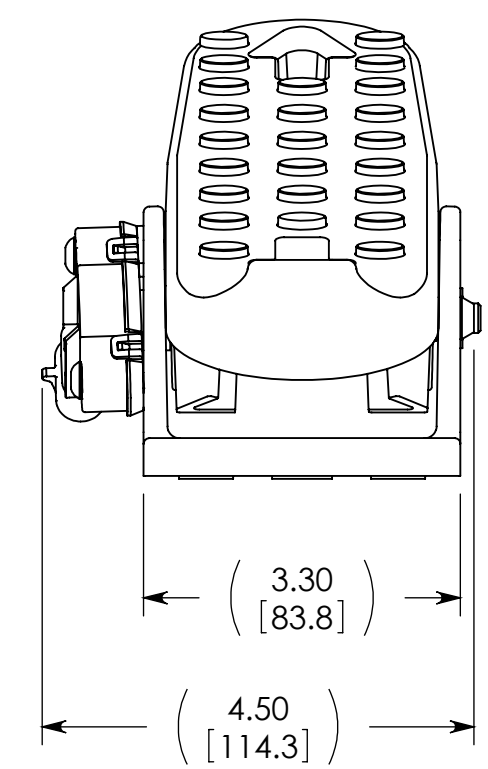
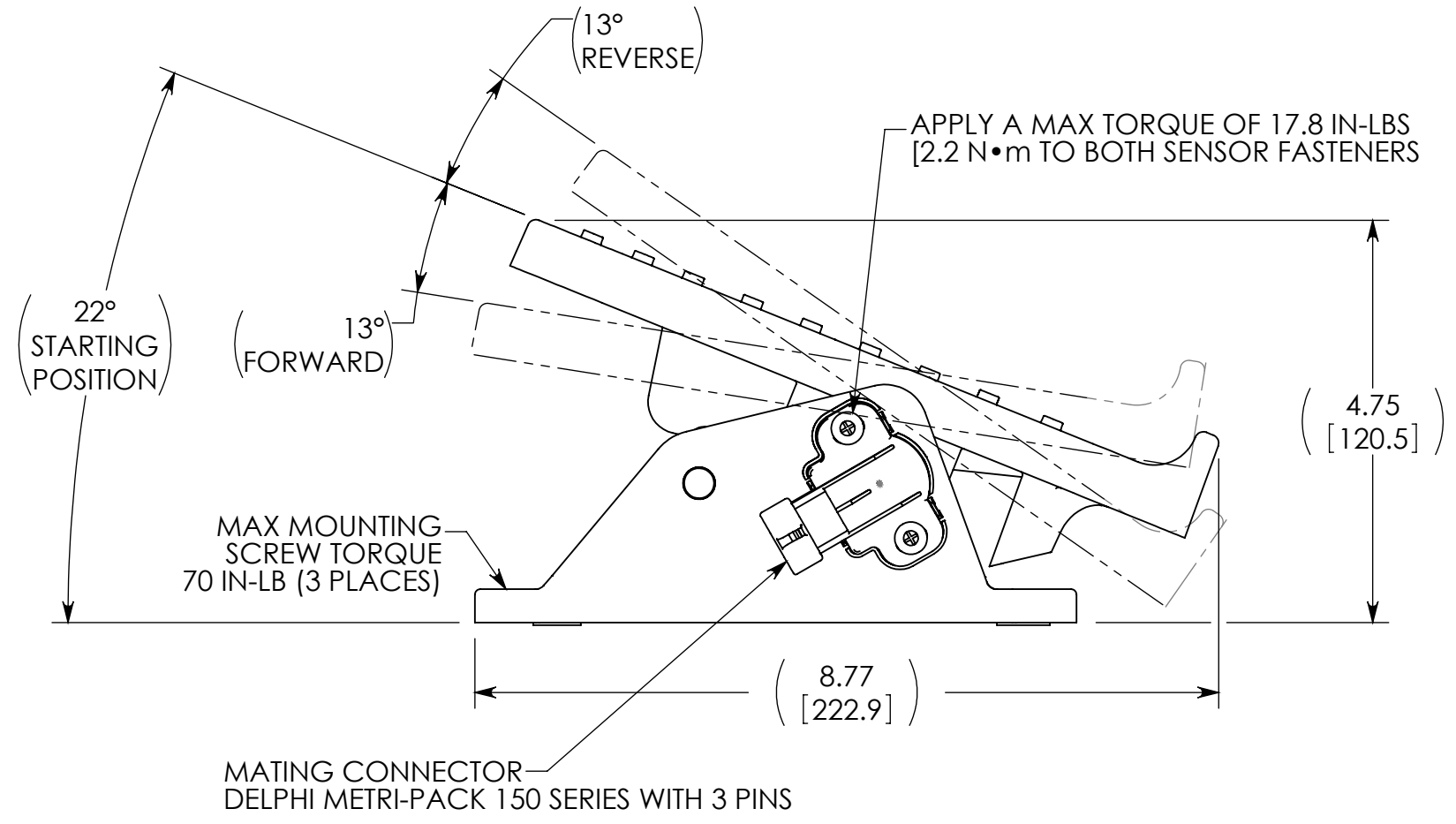
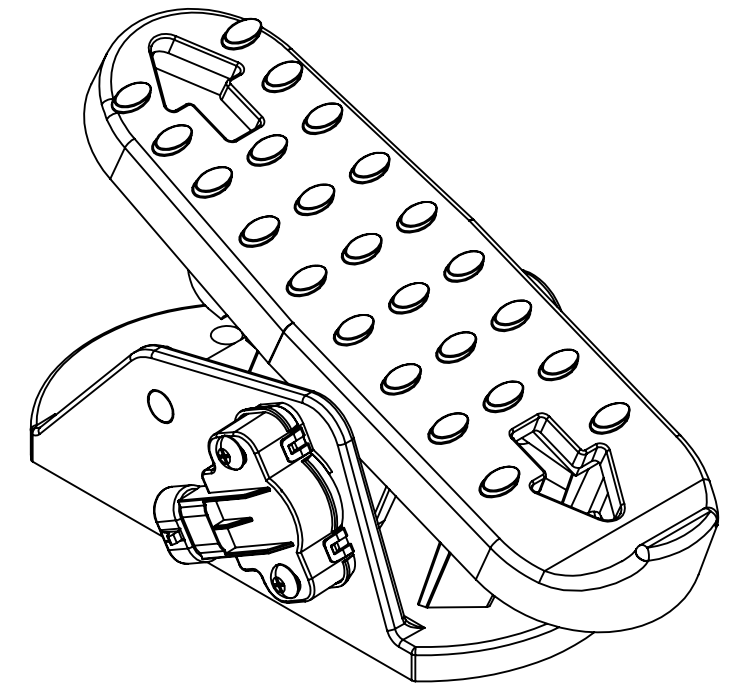
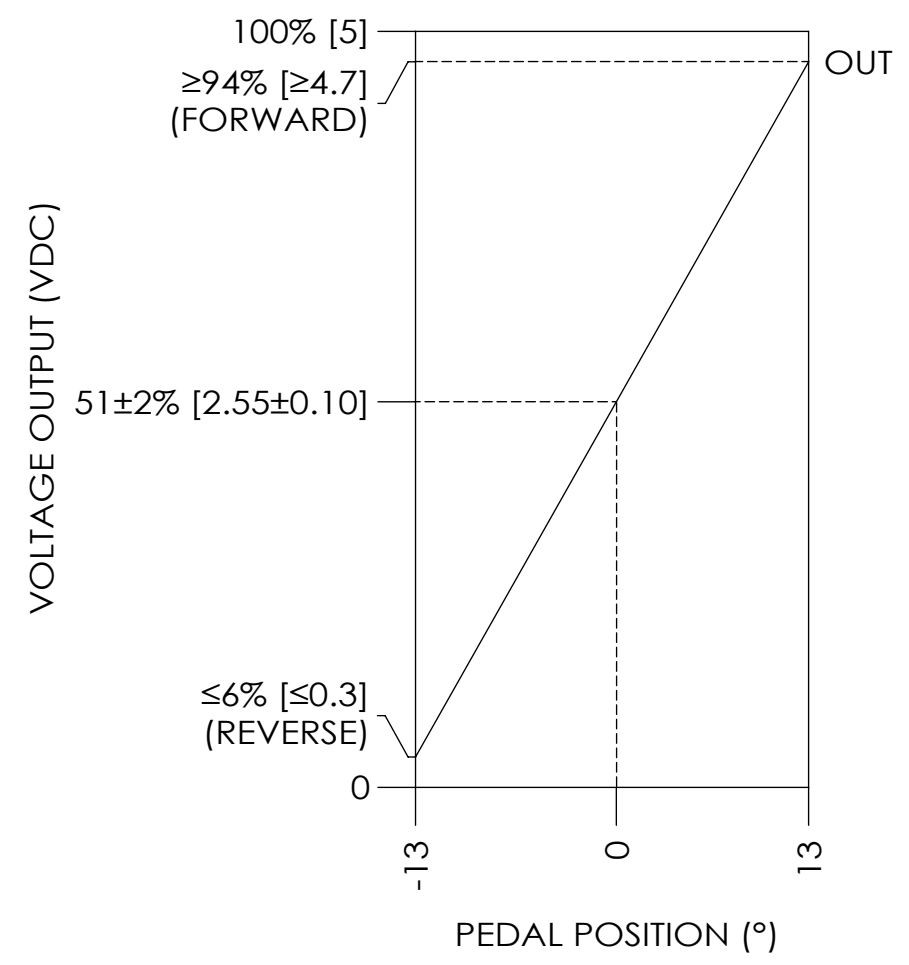


SPECIFICATIONS

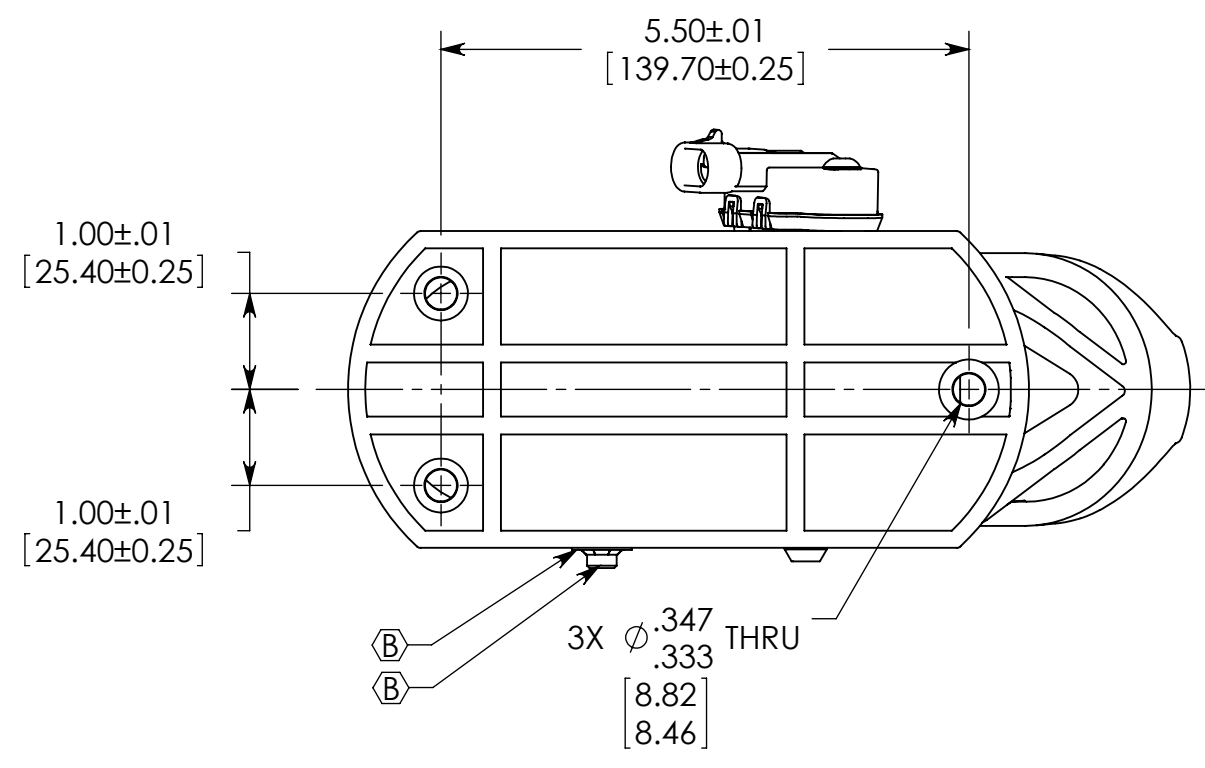
1. MECHANICAL SPECIFICATIONS
 - TRAVEL (°): ±13
 - PEDAL FORCE FORWARD (N): 15 TO 40
 - PEDAL FORCE REVERSE (N): 25 TO 50
 - WEIGHT (g): 714
 - LIFE (CYCLES): 1,000,000
2. ELECTRICAL SPECIFICATIONS
 - SENSOR TYPE: RESISTIVE ELEMENT
 - OUTPUT TYPE: SINGLE ANALOG
 - WORKING VOLTAGE (VDC): 5
 - POWER RATING AT 70 °C (W): 0.15
 - LINEARITY: ±3%
 - RESISTANCE (kΩ): 5.75±20%
 - WIPER RESISTANCE (Ω): 250
 - ELECTRICAL OUTPUT (VDC): SEE FIGURE 1
3. ENVIRONMENTAL SPECIFICATIONS
 - TEMPERATURE (°C): -40 TO 125
 - PROTECTION CLASS: IP66
4. MATERIALS
 - TREADLE: NYLON 6/6 30% GLASS FILLED COLORED BLACK
 - PEDAL BASE: NYLON 6/6 30% GLASS FILLED COLORED BLACK
 - SENSOR BODY: NYLON COLORED BLACK
 - SENSOR SHIM: ABSplus-P430 COLORED BLACK
 - SPRINGS: MUSIC WIRE PLATED WITH ZINC
 - PINS: 12L14 STEEL PLATED WITH ZINC
 - FASTENERS: STEEL PLATED WITH ZINC



SENSOR PINOUT	
PIN	FUNCTION
A	VCC+
B	OUT
C	COM-



**OUTPUT CHARACTERISTICS
FIGURE 1**



INITIALS	DATE	UNLESS OTHERWISE SPECIFIED
DRAWN BY BAP	1/27/2016	DIMENSIONS ARE IN ENGLISH in DUAL DIM [] ARE IN METRIC mm
CHECKED BY JDK	2/2/2016	ANGULAR MACH ----- ±1°
MATERIAL PER BOM		ANGULAR BEND ----- ±1°
OTHER		ONE PLACE DECIMAL ---- ±0.020
FINISH		TWO PLACE DECIMAL --- ±0.010
		THREE PLACE DECIMAL -- ±0.005
		INTERPRET GEOMETRIC TOLERANCES PER ASME Y14.5
		DO NOT SCALE DRAWING
		SCALE: 1:2 SHEET 1 OF 1

INDUSTRIAL ELECTRONIC CONTROLS ROCKFORD, IL 61109		
TITLE PEDAL ASSEMBLY, FORWARD & REVERSE		
SIZE C	DRAWING # 10479	REVISION B

REV	CIP	DESCRIPTION	BY	DATE
B	422	CHANGE TO PIN 2032 B; ADDED PUSH ON RETAINER 7126 B	WSH	4/30/2018
A	320	NEW ASSEMBLY DRAWING	BAP	2016-01-27