

## Miniature Thumb Controls

### Roller Module

Roller Modules are proportional, return-to-center thumb controls, ideally suited for applications where precision counts. This product is available pre-installed in a handle or as a kit of 5 units for servicing or flexible installation in locations like armrests, panels, or control boxes.

#### Key Features

- **Exceptionally Precise Control:** Smooth, return-to-center control and  $\pm 40^\circ$  travel guarantees precision for fine-tuned operation.
- **Maintains Accuracy:** Non-contact hall effect sensing delivers stable performance over more than 5 million cycles.
- **Industry-leading Durability:** IP67 sealed electronics operate reliably in extreme conditions from  $-40^\circ\text{C}$  to  $+85^\circ\text{C}$ .
- **Compact & Compatible:** Low-profile design fits into tight operator spaces and integrates easily into Sure Grip handles



#### Specifications

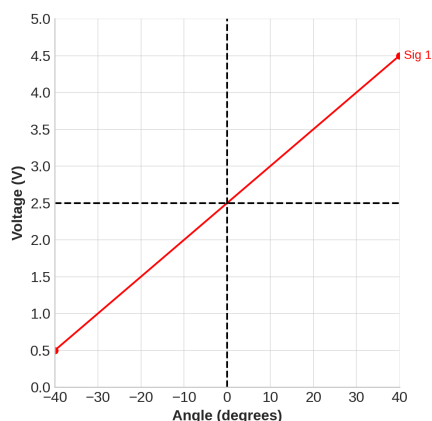
##### Mechanical

<b>Travel</b>	$\pm 40^\circ$ from center
<b>Life Expectancy</b>	>5 million cycles
<b>Functions</b>	Return-to-center
<b>Operating Temperature</b>	$-40^\circ\text{C}$ to $+85^\circ\text{C}$
<b>Sealing</b>	IP67 (electronics)

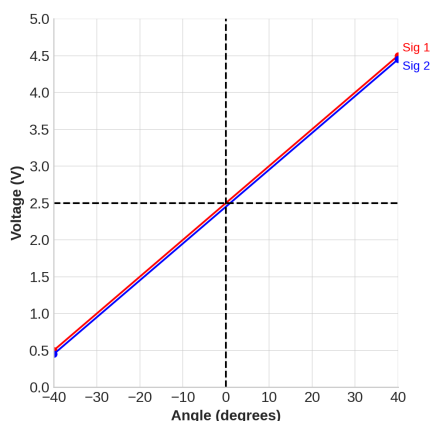
##### Electrical

Input Power Supply	Minimum	Typical	Maximum	Units
Supply Voltage	4.9	5	5.1	Vdc
Supply Current	-	10	-	mA
Control Output	Minimum	Typical	Maximum	Units
Output Voltage Low	0.45	0.5	0.7	Vdc
Output Voltage Mid	2.3	2.5	2.7	Vdc
Output Voltage High	4.3	4.5	4.55	Vdc

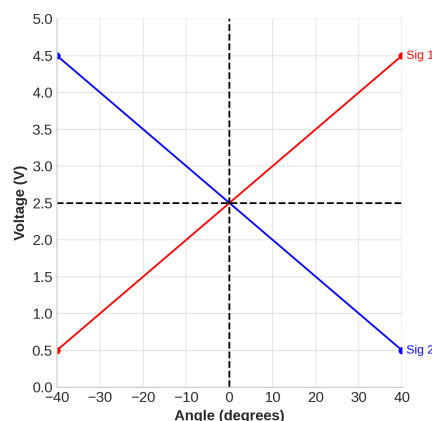
#### Output Options



Single Output

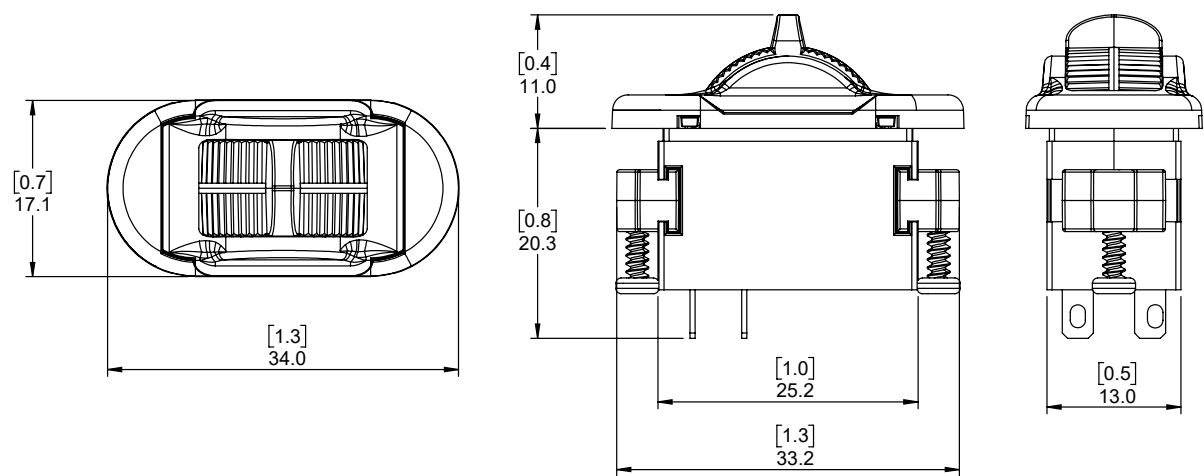


Dual Output (Parallel)



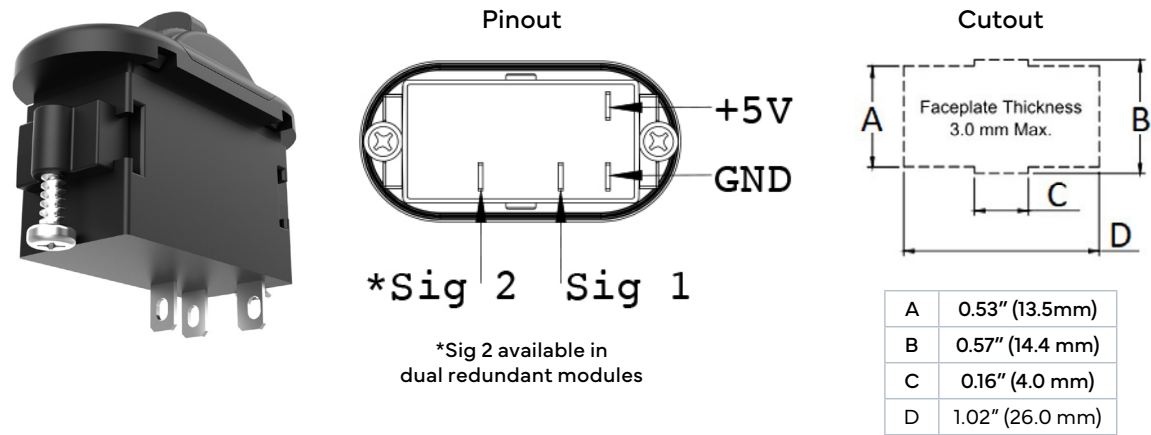
Dual Output (Mirrored)

Dimensions



Installation

**Soldering:** Keep iron tip below 350°C (660°F), limit soldering to <5 seconds  
**Post-Soldering:** Avoid applying force for at least 1 minute  
**Caution:** Excess heat or duration can damage the module



Order Now

See below to order a kit of 5 units or use our handle ordering guides to integrate this into a handle.

Part Number	Description
KIT-00157-A	5 x Single output proportional roller modules
KIT-00158-A	5 x Dual output (parallel outputs) proportional roller modules
KIT-00159-A	5 x Dual output (mirrored outputs) proportional roller modules